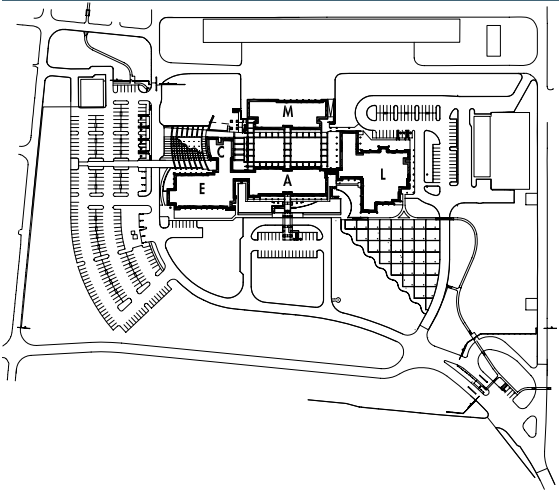


SACRAMENTO REGIONAL WASTEWATER TREATMENT PLANT

111 Scripps Drive, Sacramento, CA 95825
 P: 916.972.0131 F: 916.481.1845

The Sacramento Regional Wastewater Treatment Plant (SRWTP) expansion project includes a new state-of-the-art water laboratory. The new lab, responsible for the regulatory testing and monitoring for the Plant, includes a captured portion of 6,000 SF of existing structure remodeled for the lab's administrative offices and an addition of 18,600 SF of new technical laboratory space. The core of the new space is anchored by a centrally located Process Lab day-lit by three large north-facing monitors. The remaining perimeter lab spaces enjoy exterior glass and views of other parts of the SRWTP campus. →

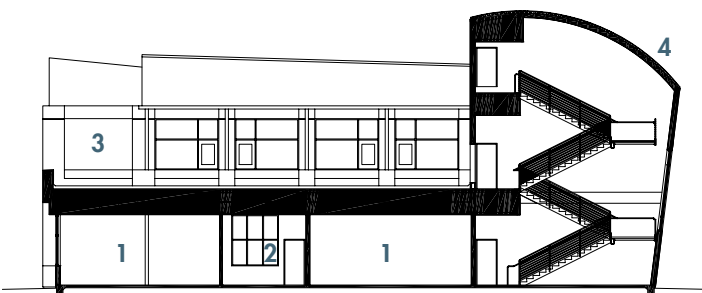


- E. Engineering
- C. Commons
- A. Administration
- L. Laboratory
- M. Maintenance



Site Plan

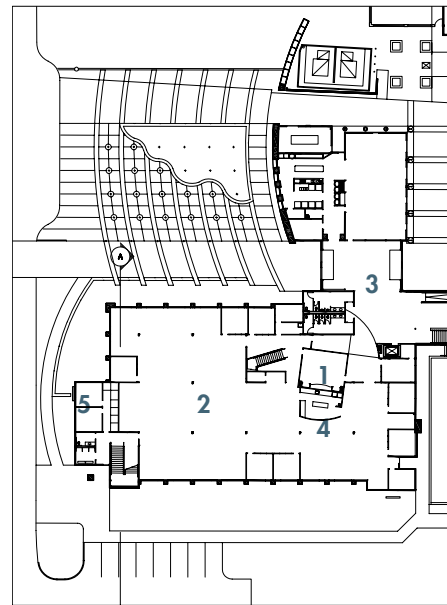
0 250'



- 1. Open Office
- 2. Office
- 3. Built-up roof on metal deck
- 4. Curved standing seam metal roof

Section

0 15'



- 1. Conference Room
- 2. Open Office
- 3. Staff Lobby
- 4. Coffee / Work Room
- 5. Storage

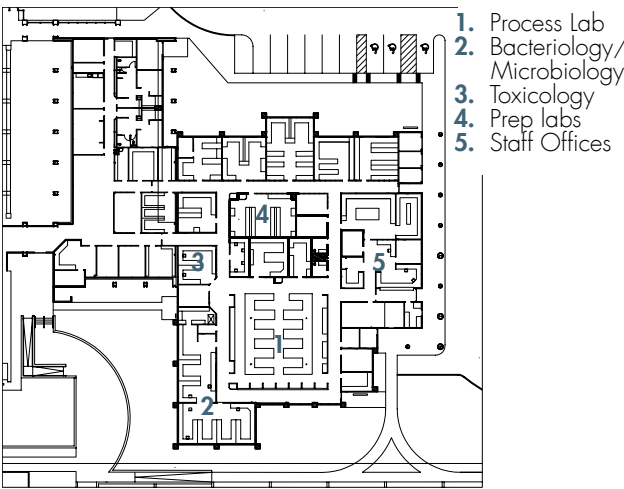
Engineering and Commons

0 50'



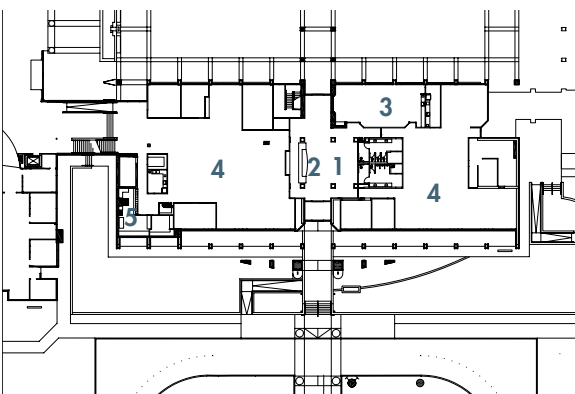
111 Scripps Drive, Sacramento, CA 95825
 P: 916.972.0131 F: 916.481.1845

The expansion project successfully incorporates over 40,000 SF of existing buildings seamlessly integrated with over 55,000 SF of new construction to establish an entirely new campus. Beyond a simple renovation of the existing space, MFDB's approach provides a finished collection of buildings and spaces where the line between old and new is substantially blurred. At one end of an existing focal courtyard you can see the transition from existing single-story structures to the new two-story offices and Commons Building. A new pedestrian-friendly terrace sits in front of the two-story glass facade of Commons Building and is activated by the pleasant sounds of the facing water feature. The Commons Building provides space utilized by all departments of the Plant staff for both formal and informal meetings and cafeteria space.



Laboratory

0 60'



Administration

0 30'

